



NATURAL (RENA)



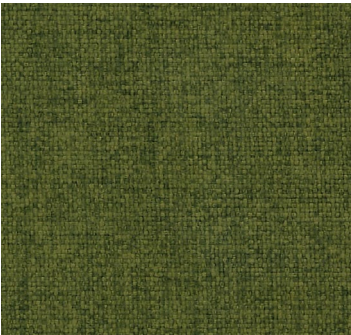
WALNUT (REWA)



FENNEL SEED (REFE)



RED (RERE)



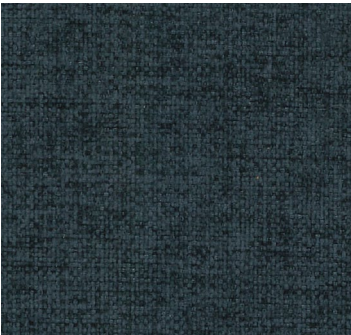
PALM (REPA)



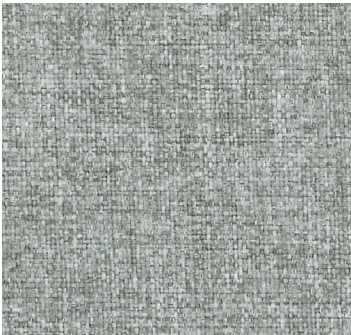
EGG BLUE (REEG)



BLUE (REBL)



STEEL BLUE (REST)



GREY MIST (REGR)



PEWTER (REPE)



CHARCOAL (RECH)

Reef

Inspired by the calm beauty of coastal landscapes, the Reef fabric range brings a sense of natural ease to any workspace. Its versatile palette – from warm Walnut and Fennel Seed to cool Blue, Palm, and Grey Mist – is grounded in earthy tones and marine-inspired hues. Soft in appearance, yet durable in structure, Reef adds a layer of refined elegance to seating and screens alike, creating spaces that feel balanced, welcoming, and well-composed.

TECHNICAL SPECIFICATIONS

Composition:	100% Polyester
Weight:	380g/m ²
Roll Width:	142cm
Abrasion Rating:	> 40,000 rubs (Martindale)
Flammability:	BS 5852 Part 1: 1979 (Cigarette) BS 5852 Part 1: 1979 (Match)
Colour Matching:	Batch to batch variations in colour may occur within commercial tolerances

MAINTENANCE & CLEANING

We recommend professional dry cleaning for Reef fabric.

- Protect from direct sunlight.
- Vacuum regularly using low suction.
- Wipe clean with a damp cloth using upholstery shampoo.
- Don't scrub or use stiff brush.
- Don't use dishwashing or laundry detergents.
- Dry in the shade, away from direct heat.
- Allow to dry thoroughly before reusing.

ENVIRONMENTAL

As a caring, corporate citizen, we support the responsible stewardship of the earth, its inhabitants and its resources.

Our fabrics are designed and made to last, and in their manufacture, use and disposal, embody the environmental principles of Reduce, Reuse & Recycle.