

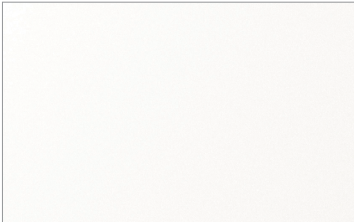
# Melamine



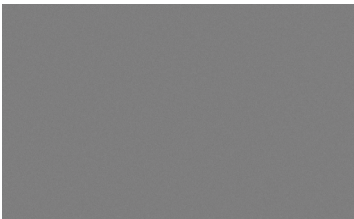
**COLOUR:**  
STANDARD

**SQUARE CORNERS:**  
STANDARD

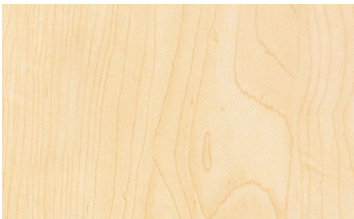
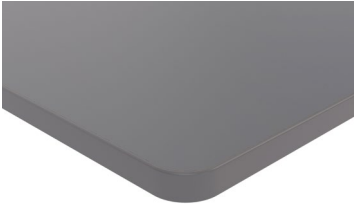
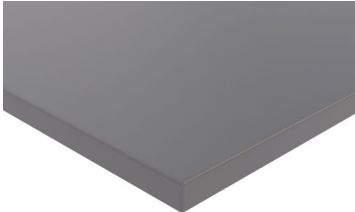
**RADIUS CORNERS:**  
UPGRADE 35 OR 100MM



WHITE (W)



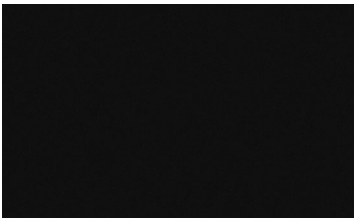
SILVER (S)



NORDIC MAPLE (NM)



ATLANTIC OAK (AO)



BLACK (BL)



# Melamine

Our tops are precision-manufactured using high-quality 25mm FSC® certified particle board, which meets strict E1 low formaldehyde emission standards, supporting both indoor air quality and sustainable sourcing.

The surface is finished with a durable, commercially-rated melamine or high-pressure laminate, available in a wide range of modern and classic decors to suit any space. Each top is edge-banded with 2mm heavy-duty PVC edging, hot-glued and semi-sealed for maximum resistance to impact, moisture, and everyday wear and tear. This edging not only enhances longevity but also provides a clean, professional finish ideal for high-use environments such as offices, education, and hospitality.

All tops are produced in an ISO 9001-certified manufacturing facility, ensuring consistent quality, precision workmanship, and adherence to internationally recognised quality management systems.

## MAINTENANCE & CLEANING

Melamine is low maintenance and easy to clean. Simply wipe down with a clean, damp cloth. With stubborn grease and grime, use vinegar diluted with water or Selleys Sugar Soap.

For darker melamine surfaces use a streak-free glass cleaner with a soft cloth to remove smears and fingerprints.

Important: Always wipe with a damp cloth, then a dry cloth after cleaning to remove moisture. Never use abrasive cleaners or cleaning tools on Melamine such as; Jiff, Vim, Brasso, steel wool or abrasive sponges. We also recommend caution in using bleach and alcohol based cleaners.

## ENVIRONMENTAL

As a caring, corporate citizen, we support the responsible stewardship of the earth, its inhabitants and its resources.

Our worksurfaces are designed and made to last, and in their manufacture, use and disposal, embody the environmental principles of Reduce, Reuse & Recycle.

Please contact our sales team for custom manufacturing options.